

**Vol. 10**  
Catalogue 2019-2020

# CORPORATE UNIFORM



*Best Seller*  
**DENIMSOFT**

*Signature Soft Fabric*  
**POLYCOTTON**



More than 20 designs | 5 Fabric materials | 10 ready made sizes

*Simple & Nice*



# About Us



**FACTORY  
IN MALAYSIA**

10th year  
brand establishment!



## EXPERIENCE MANUFACTURER

With over 28 years' experience working in the uniform manufacturing industry, MR2 has a wealth of knowledge in this field. From designing to manufacturing we aim to deliver the highest quality for you and your team.



## EXPERTISE & WORKMANSHIP

Our mastercutters are professionally trained to tailor the perfect standardized uniform cutting that is custom-built for a majority of the population. Providing comfort and great impressions for you is what matters most!



## EXTENSIVE RANGE & READY MADE SIZING

We have the largest selection of ready-made sizes ranging from 2XS to 5XL. Since our corporate wears are made ready with a variety of designs to ensure your profession look is portrayed, our uniforms can be delivered promptly.



## FIVE STAR PRODUCTS & SERVICE QUALITY

With our approachable staffs and suppliers across Malaysia, we want to offer you the best product quality.

Get in touch with us! We value your support and feedback!



‘ We design,  
we manufacture,  
and we deliver  
the highest quality  
Corporate wear ’

LH Too

Founder of MR2



Simple & Nice

## WHO WE ARE

We are founded back in 2009 and have been known since for providing an extensive range of catalogue uniform products, as well as working on custom uniforms for various industries, government sectors, events and companies.

**‘MR2’s aspiration is to be the best corporate uniform provider  
by creating simple yet fashionable uniforms and remain  
outstanding in price value proposition.’**

Our unrivalled expertise is to ensure your brand identity will be well-presented as forefront branding to connect with your consumers. From fabric sourcing to finishing, our team of experts pay close attention into every detail to provide end-products that are both comfortable and durable. Throughout the years, millions of products have been sold across Malaysia and the SEA. Hence, our products have been tried and tested by large base of loyal customers with a stamp of approval and satisfaction! We look forward to work with you and serve your queries!



**IMPORTED FABRIC FOR SALE**

### Recommended Care Instructions:



Machine Warm Wash  
with similar colour



Do Not Bleach



Iron Low Heat



Do Not Tumble Dry



For best result,  
Cold hand wash and hang to dry





**8** FC 892 & FC 992 

**10** FC 816 & FC 916

**12** FC 819 & FC 919

**14** FC 823 & FC 1023



**16** FC 882 & FC 1082

**18** FC 891 & FC 991

**20** FC 893 & FC 1093

**22** FC 897 & FC 997

**24** FC 801 & FC 901 & FC 1001 (KPM)



**28** FD 726 & FD 826 & FD 926 

**30** FD 827 & FD 927

**32** FD 882 & FD 1082



**36** FX 825 & FX 925



**40** FM 895 & FM 995



**44** FP 811 & FP 911

**46** FP 812 & FP 912

**48** FP 813 & FP 913

**50** FP 817 & FP 917

**52** FP 821 & FP 921

**54** FP 822 & FP 922

**56** FP 883 & FP 983

**58** FP 887 & FP 987



**60** Tracksuits & Slack Pants & Long Skirt

**62** Size Chart & Measurement Guide

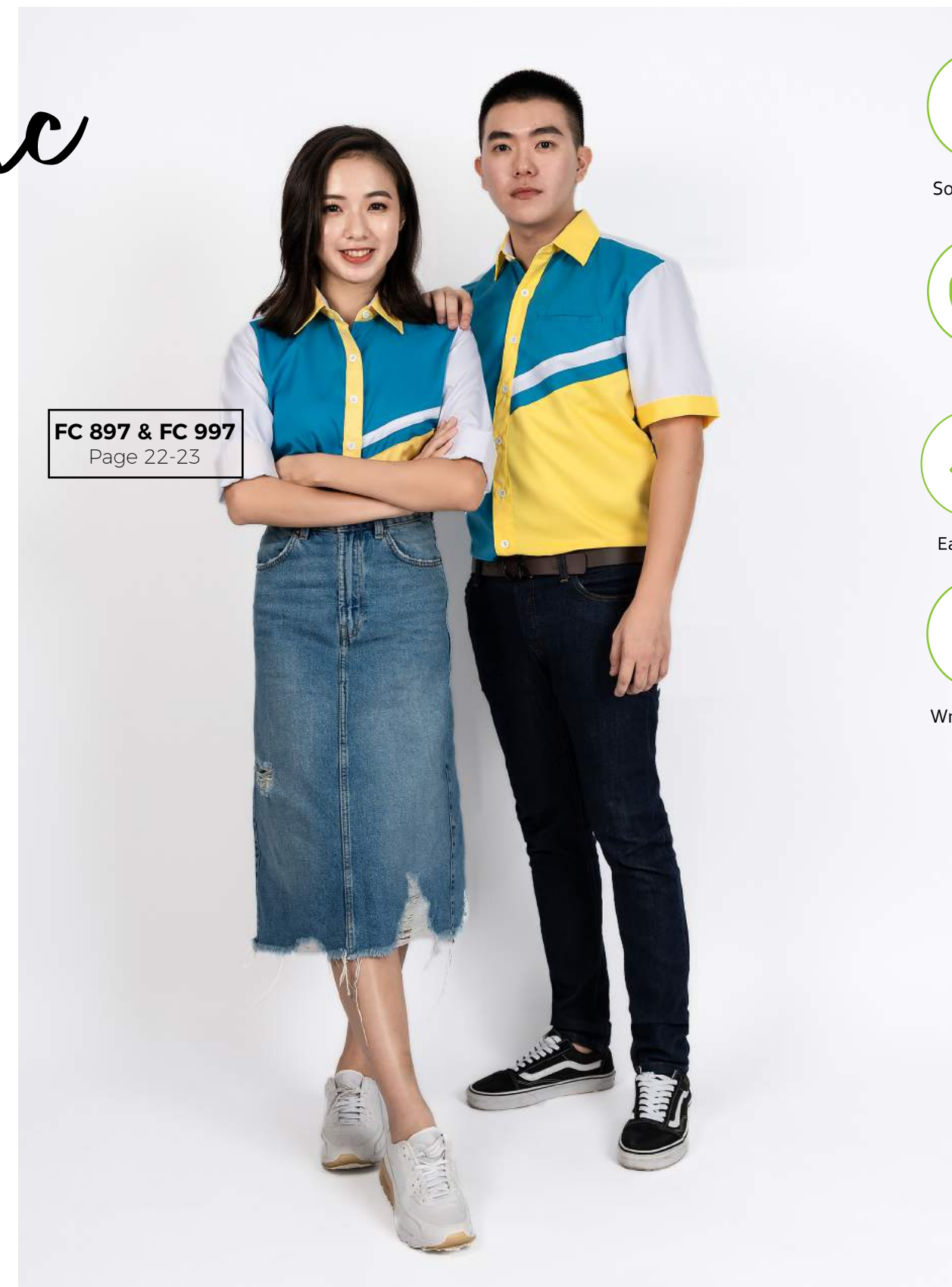
**64** Other Services



# Signature Fabric



**FC 892 & FC 992**  
Page 8-9



**FC 897 & FC 997**  
Page 22-23

## Polycotton



Softer Fabric



Durable



Easy Care



Wrinkle-Free

**In-House Fabric.** Specially source and perfectly blend of soft cotton and polyester is the flawless result of durable and comfortable uniform fabric. It is designed to be highly versatile and functional workwear.

\* Fabric for sale in roll or meter.



# Polycotton

FC892 & FC992

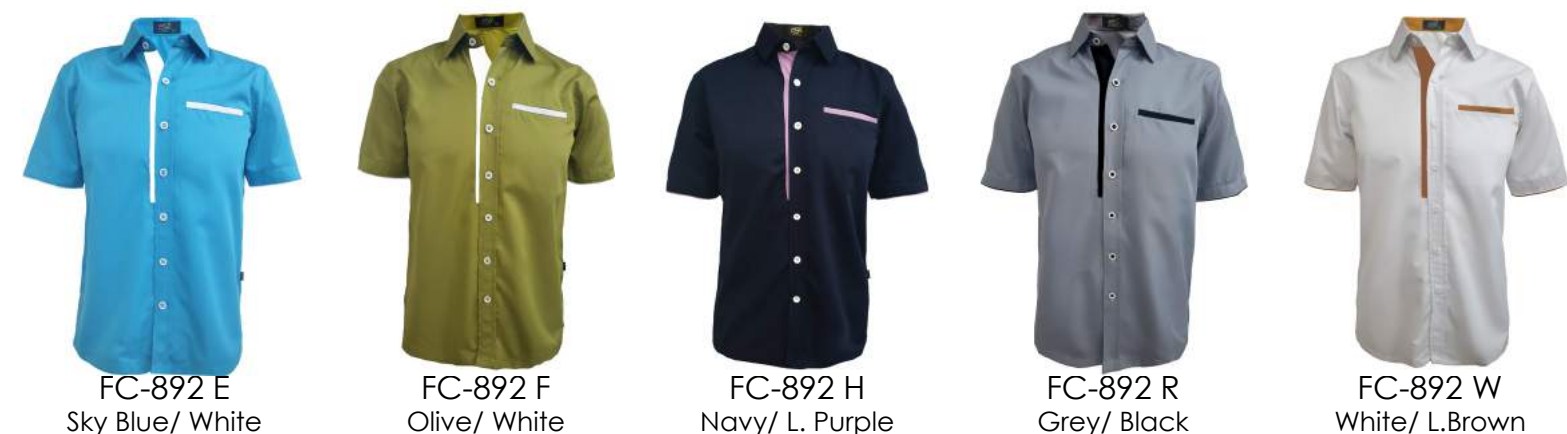


\* FC892 with Inner Pocket (left)



Softer Fabric | Durable | Easy Care | Wrinkle Free

\* Please refer page 62-63 for Size Chart







[Back View]



[Back View]



FC-816 A  
Red/ White



FC-816 F  
Olive/ White



FC-816 G  
R.Blue/ White



FC-816 H  
Navy/ White



FC-816 K  
Black/ White



FC-816 P  
Purple/ White

## FC 816 MEN SERIES

SIZE: XS - 5XL | Short Sleeves

## FC 916 LADIES SERIES

SIZE: 2XS - 5XL | Cuff Sleeves



FC-916 A  
Red/ White



FC-916 F  
Olive/ White



FC-916 G  
R.Blue/ White



FC-916 H  
Navy/ White



FC-916 K  
Black/ White



FC-916 P  
Purple/ White

\* FC816 with Round Cut Pocket (left)



Softer Fabric | Durable | Easy Care | Wrinkle Free

\* Please refer page 62-63 for Size Chart



Polycotton  
FC819 & FC919

## FC 819 MEN SERIES

SIZE: XS - 5XL | Short Sleeves



FC-819 A  
Red/ White/ Navy



FC-819 E  
Cyan/ White/ Navy



FC-819 G  
R.Blue/ White/ Red



FC-819 M  
Magenta/ White/ Black



[Back View]

\* FC819 with Inner Pocket (left)

## FC 919 LADIES SERIES

SIZE: 2XS - 5XL | Cuff Sleeves



FC-919 A  
Red/ White/ Navy



FC-919 E  
Cyan/ White/ Navy



FC-919 G  
R.Blue/ White/ Red



FC-919 M  
Magenta/ White/ Black



[Back View]

\* FC919 with Inner Side Pocket

Softer Fabric | Durable | Easy Care | Wrinkle Free

\* Please refer page 62-63 for Size Chart







\* FC823 with Round Cut Pocket (left)

\* FC1023 with Inner Side Pocket



Softer Fabric | Durable | Easy Care | Wrinkle Free

\* Please refer page 62-63 for Size Chart

## FC 823 MEN SERIES

SIZE: XS - 5XL | Short Sleeves



FC-823 A  
Red/ White



FC-823 C  
Black/ Green



FC-823 E  
M.Green/ White



FC-823 G  
R.blue/ White



FC-823 R  
Black /Red



FC-823 W  
White /R.Blue



[Back View]

## FC 1023 MUSLIMAH SERIES

SIZE: 2XS - 5XL | Cuff Sleeves



FC-1023 A  
Red/ White



FC-1023 C  
Black/ Green



FC-1023 E  
M.Green/ White



FC-1023 G  
R.blue/ White



FC-1023 R  
Black /Red



FC-1023 W  
White /R.Blue



[Back View]





[Back View]



[Back View]

\* FC882 with 2 Round Cut Pockets and Pen Hole  
\* FC1082 with Inner Side Pocket



Softer Fabric | Durable | Easy Care | Wrinkle Free

\* Please refer page 62-63 for Size Chart



## FC 882 MEN SERIES

SIZE: XS - 5XL | Short Sleeves



FC-882 G  
R.Blue/ A.Green



FC-882 M  
Black/ Magenta



FC-882 P  
Dark Purple/ White



FC-882 R  
Brown/ Navy



## FC 1082 MUSLIMAH SERIES

SIZE: 2XS - 5XL | Elastic Sleeves



FC-1082 G  
R.Blue/ A.Green



FC-1082 M  
Black/ Magenta



FC-1082 P  
Dark Purple/ White



FC-1082 R  
Brown/ Navy





\* FC891 with Inner Pocket (left)

\* FC991 with Inner Side Pocket



Softer Fabric | Durable | Easy Care | Wrinkle Free

\* Please refer page 62-63 for Size Chart

## FC 891 MEN SERIES

SIZE: XS - 5XL | Short Sleeves



FC-891 A  
Red/ Yellow/ White



FC-891 C  
A.Green/ Black/ White



FC-891 G  
R.Blue/ Yellow/ White



FC-891 M  
Navy/ Magenta/ White



FC-891 Q  
Sky Blue/ Red/ White



[Back View]

## FC 991 LADIES SERIES

SIZE: 2XS - 5XL | Cuff Sleeves



FC-991 A  
Red/ Yellow/ White



FC-991 C  
A.Green/ Black/ White



FC-991 G  
R.Blue/ Yellow/ White



FC-991 M  
Navy/ Magenta/ White



FC-991 Q  
Sky Blue/ Red/ White



[Back View]





\* FC893 with Inner Pocket (left)  
\* FC1093 with 2 Inner Side Pockets



Softer Fabric | Durable | Easy Care | Wrinkle Free  
\* Please refer page 62-63 for Size Chart

## FC 893 MEN SERIES

SIZE: XS - 5XL | Short Sleeves



FC-893 A  
Red/ Navy/ White



FC-893 E  
Cyan/ Black/ White



FC-893 G  
R.Blue/ Red/ White



FC-893 M  
Magenta/ Black/ White



FC-893 P  
Navy/ Purple/ White



FC-893 F  
Orange/ Black/ White



FC-893 Q  
Sky Blue/ Red/ White



[Back View]

## FC 1093 MUSLIMAH SERIES

SIZE: 2XS - 5XL | Cuff Sleeves



FC-1093 A  
Red/ Navy/ White



FC-1093 E  
Cyan/ Black/ White



FC-1093 G  
R.Blue/ Red/ White



FC-1093 M  
Magenta/ Black/ White



FC-1093 P  
Navy/ Purple/ White



FC-1093 F  
Orange/ Black/ White



FC-1093 Q  
Sky Blue/ Red/ White



[Back View]





\* FC897 with Inner Pocket (left)



Softer Fabric | Durable | Easy Care | Wrinkle Free

\* Please refer page 62-63 for Size Chart

## FC 897 MEN SERIES

SIZE: XS - 5XL | Short Sleeves



FC-897 A  
Red/ R.blue/ White



FC-897 E  
Cyan/ White/ Yellow



FC-897 K  
Black/ Red/ Yellow



FC-897 M  
Black/ Magenta/ White



FC-897 Q  
Cyan/ Red/ White



FC-897 P  
Purple/ Black/ White



[Back View]

## FC 997 LADIES SERIES

SIZE: 2XS - 5XL | Cuff Sleeves



FC-997 A  
Red/ R.blue/ White



FC-997 E  
Cyan/ White/ Yellow



FC-997 K  
Black/ Red/ Yellow



FC-997 M  
Black/ Magenta/ White



FC-997 Q  
Cyan/ Red/ White



FC-997 P  
Purple/ Black/ White



[Back View]



# Polycotton

FC801 &amp; FC901 &amp; FC1001



Softer Fabric



Durable



Easy Care



Wrinkle-Free

FC-801 H  
White/ NavyFC-1001 H  
White/ NavyFC-901 H  
White/ Navy

**FC 801 H** : Men Short Sleeves  
**FC 901 H** : Ladies Long Sleeves  
**FC 1001 H** : Muslimah Long Sleeves

\* FC801 with Inner Pocket (left)

\* FC1001 with Inner Side Pocket



[Back View]



[Back View]

FC-801H SIZE CHART \*Similar to size chart page 63

	XS	S	M	L	XL	2XL	3XL	4XL	5XL
Shoulder 肩宽 bahu	17.5"	18"	19"	20"	21"	21.5"	22"	22.5"	23"
Bust 胸围 dada	40"	42"	44"	46"	49"	52"	55"	58"	61"
Sleeve Length 袖长 lengan	9"	10"	10.5"	11"	11.5"	12"	12"	12"	12"
Shirt Length 衣长 panjang baju	28"	29"	29.5"	30.5"	31"	32"	33"	33"	33"

FC-901H SIZE CHART \*Added extra +2 inches shirt length

	2XS	XS	S	M	L	XL	2XL	3XL	4XL	5XL
Shoulder 肩宽 bahu	13"	14"	15"	16"	17"	18"	19"	19.5"	20"	20.5"
Bust 胸围 dada	36"	38"	40"	42"	44"	46"	48"	51"	54"	57"
Waist 腰围 pinggang	31"	33"	35"	37"	41"	44"	46"	49"	52"	55"
Sleeve Length 袖长 lengan	21"	21"	22"	22"	23"	23"	23"	23"	24"	24"
Shirt Length 衣长 panjang baju	28"	29"	30"	31"	31"	32"	32.5"	32.5"	33"	33"
Hip 臀围 punggung	37"	40"	42"	43"	45"	48"	52"	55"	58"	61"

FC-1001H SIZE CHART \*Similar to size chart page 63

	2XS	XS	S	M	L	XL	2XL	3XL	4XL	5XL
Shoulder 肩宽 bahu	13"	14"	15"	16"	17"	18"	19"	19.5"	20"	20.5"
Bust 胸围 dada	36"	38"	40"	42"	44"	46"	48"	51"	54"	57"
Waist 腰围 pinggang	31"	33"	35"	37"	41"	44"	46"	49"	52"	55"
Sleeve Length 袖长 lengan	21"	21"	22"	22"	23"	23"	23"	23"	24"	24"
Shirt Length 衣长 panjang baju	32"	33"	34"	35"	35"	36"	36.5"	36.5"	37"	37"
Hip 臀围 punggung	37"	40"	42"	43"	45"	48"	52"	55"	58"	61"



# DENIMSOFT

Modern with style



Lightweight



Softer Fabric



Durable



## SMART CASUAL

Denim is highly durable, lasting and stylish-- a truly modern way to dress up!  
The product's shades may vary due to it's unique fabric characteristic.



FD 827 & FD 927  
Page 30-31

FD 726 & FD 826 & FD 926  
Page 26-27





## MEN

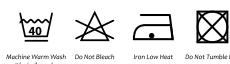
LONG CUFF  
SLEEVES

Rolled up or down



## FD 726 MEN SERIES

SIZE: XS - 5XL | Long Cuff Sleeves

FD-726 K  
Denim BlackFD-726 N  
Denim NavyFD-726 Q  
Denim BlueLightweight | Softer Fabric | Durable  
\* Please refer page 62-63 for Size Chart

## FD 826 MEN SERIES

SIZE: XS - 5XL | Short Sleeves

FD-826 K  
Denim BlackFD-826 N  
Denim NavyFD-826 Q  
Denim Blue

[Back View]

## FD 926 LADIES SERIES

SIZE: 2XS - 5XL | Cuff Sleeves

FD-926 K  
Denim BlackFD-926 N  
Denim NavyFD-926 Q  
Denim Blue

[Back View]

\*We urge to wash the denim product separately and avoid strong detergent.





## FD 827 MEN SERIES

SIZE: XS - 5XL | Short Sleeves



FD-827 K  
Denim Black



FD-827 Q  
Denim Blue



FD-827 N  
Denim Navy



[Back View]

## FD 927 LADIES SERIES

SIZE: 2XS - 5XL | Cuff Sleeves



FD-927 K  
Denim Black



FD-927 Q  
Denim Blue



FD-927 N  
Denim Navy



[Back View]

\* FD827 with Inner Pocket (left)  
\* FD927 with Inner Side Pocket



Lightweight | Softer Fabric | Durable  
\* Please refer page 62-63 for Size Chart

\*We urge to wash the denim product separately and avoid strong detergent.

\* FD827 with Inner Pocket (left)  
\* FD927 with Inner Side Pocket



# DENIMSOFT

FD882 & FD1082



[Back View]



[Back View]



## FD 882 MEN SERIES

SIZE: XS - 5XL | Short Sleeves

FD-882 K  
Denim BlackFD-882 N  
Denim Navy

## FD 1082 MUSLIMAH SERIES

SIZE: 2XS - 5XL | Elastic Sleeves

FD-1082 K  
Denim BlackFD-1082 N  
Denim Navy

\* FD882 with 2 Round Cut Pocket and Pen Hole  
\* FD1082 with Inner Side Pocket



Lightweight | Softer Fabric | Durable  
\* Please refer page 62-63 for Size Chart

\*We urge to wash the denim product separately and avoid strong detergent.



# Oxford



Breathable



Durable



Knitted  
Basket type

**FX 825 & 925**  
Page 36-37



‘ DRESS  
TO  
IMPRESS ’



Perfectly combining comfort and formality, The Oxford shirt is an icon of menswear. The fine texture is a great choice for both casual and formal occasions. It will ensure wearers well in variety of settings.

\* Fabric for sale in roll or meter.



# Oxford

FX825 & FX925



## FX 825 MEN SERIES

SIZE: XS - 5XL | Short Sleeves



FX-825 A  
Red



FX-825 E  
Violet Blue



FX-825 P  
Light Purple



FX-825 Q  
Light Blue



FX-825 W  
White



[Back View]

## FX 925 LADIES SERIES

SIZE: 2XS - 5XL | Cuff Sleeves



FX-925 A  
Red



FX-925 E  
Violet Blue



FX-925 P  
Light Purple



FX-925 Q  
Light Blue



FX-925 W  
White



[Back View]



# Micropoly



Easy Care



Breathable



Vibrant Colour



Wrinkle-Free

**FM 895 & 995**  
Page 40-41







[Back View]



FM-895 A  
Red/White



FM-895 C  
Cyan/ White



FM-895 G  
R.Blue/ White



FM-895 H  
Navy/ White

## FM 895 MEN SERIES

SIZE: XS - 5XL | Short Sleeves



[Back View]



FM-995 A  
Red/White



FM-995 C  
Cyan/ White



FM-995 G  
R.Blue/ White



FM-995 H  
Navy/ White

## FM 995 LADIES SERIES

SIZE: 2XS - 5XL | Cuff Sleeves

\* FM895 with Inner Pocket (left)



Easy Care | Breathable | Vibrant Colour | Wrinkle-Free  
\* Please refer page 62-63 for Size Chart



# Polysoft



Durable



Vibrant Colour



Easy Care



Wrinkle-Free

**FP 887 & FP 987**  
Page 58-59

## Working Style.

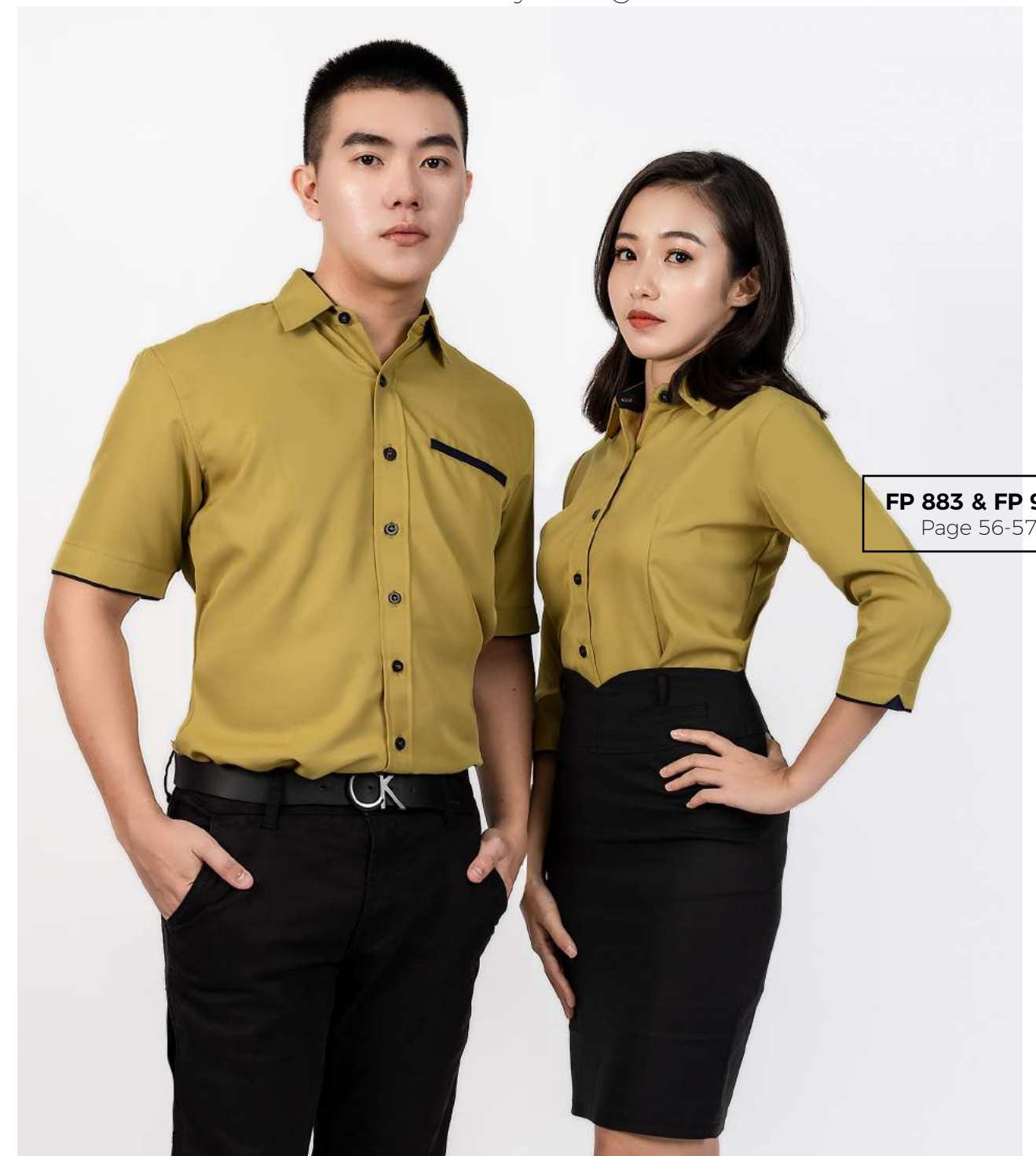
\* Fabric for sale in roll or meter.



**FP 812 & FP 912**  
Page 46-47

## WRINKLE-FREE

All Day Long



**FP 883 & FP 983**  
Page 56-57





\* FP811 with Inner Pocket (left)



Durable | Vibrant Colour | Easy Care | Wrinkle Free  
\* Please refer page 62-63 for Size Chart

## FP 811 MEN SERIES

SIZE: XS - 5XL | Short Sleeves



FP-811 A  
White/ Navy



FP-811 C  
White/ R.Blue



FP-811 E  
White/ Red



FP-811 F  
White/ Orange



[Back View]

## FP 911 LADIES SERIES

SIZE: 2XS - 5XL | 3/4 Sleeves



FP-911 A  
White/ Navy



FP-911 C  
White/ R.Blue



FP-911 E  
White/ Red



FP-911 F  
White/ Orange



[Back View]





\* FP812 with Round Cut Pocket and Pen Hole (left)



Durable | Vibrant Colour | Easy Care | Wrinkle Free

\* Please refer page 62-63 for Size Chart

## FP 812 MEN SERIES

SIZE: XS - 5XL | Short Sleeves



FP-812 A  
Black/ Red



FP-812 C  
Black/ A.Green



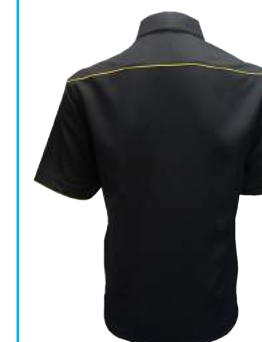
FP-812 E  
Black/ Beige



FP-812 F  
Black/ Yellow



FP-812 G  
Black/ Orange



[Back View]

## FP 912 LADIES SERIES

SIZE: 2XS - 5XL | 3/4 Sleeves



FP-912 A  
Black/ Red



FP-912 C  
Black/ A.Green



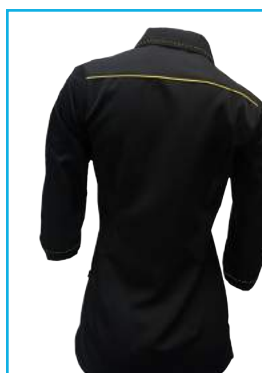
FP-912 E  
Black/ Beige



FP-912 F  
Black/ Yellow



FP-912 G  
Black/ Orange



[Back View]





\*FP813 with Round Cut Pocket and Pen Hole (left)



## FP 813 MEN SERIES

SIZE: XS - 5XL | Short Sleeves



FP-813 A  
Red/ White



FP-813 C  
Khaki/ Black



FP-813 E  
L.Green/ Navy



FP-813 F  
Beige/ Navy



FP-813 G  
R.Blue/ White



FP-813 P  
Navy/ L.Purple



FP-813 R  
Grey/ Black



[Back View]



Durable | Vibrant Colour | Easy Care | Wrinkle Free  
\* Please refer page 62-63 for Size Chart



## FP 913 LADIES SERIES

SIZE: 2XS - 5XL | 3/4 Sleeves



FP-913 A  
Red/ White



FP-913 C  
Khaki/ Black



FP-913 E  
L.Green/ Navy



FP-913 F  
Beige/ Navy



FP-913 G  
R.Blue/ White



FP-913 P  
Navy/ L.Purple



FP-913 R  
Grey/ Black



[Back View]





FP-817 A  
White/ Red



FP-817 E  
White/ M.Green



FP-817 F  
White/ Orange



FP-817 G  
White/ R.Blue



FP-817 P  
White/ Purple



FP-817 Q  
White/ Cyan



[Back View]

## FP 817 MEN SERIES

SIZE: XS - 5XL | Short Sleeves

## FP 917 LADIES SERIES

SIZE: 2XS - 5XL | 2-in-1 Sleeves



FP-917 A  
White/ Red



FP-917 E  
White/ M.Green



FP-917 F  
White/ Orange



FP-917 G  
White/ R.Blue



FP-917 P  
White/ Purple



FP-917 Q  
White/ Cyan



[Back View]

\* FP817 with 2 Inner Pockets  
\* FP917 with 2 Inner Pockets



Durable | Vibrant Colour | Easy Care | Wrinkle Free  
\* Please refer page 62-63 for Size Chart





[Back View]



[Back View]



## FP 821 MEN SERIES

SIZE: XS - 5XL | Short Sleeves



FP-821 A  
Cyan/ White



FP-821 C  
P.Green/ White



FP-821 E  
Yellow/ Black



FP-821 F  
Orange/ Beige

## FP 921 LADIES SERIES

SIZE: 2XS - 5XL | 3/4 Sleeves



FP-921 A  
Cyan/ White



FP-921 C  
P.Green/ White



FP-921 E  
Yellow/ Black



FP-921 F  
Orange/ Beige

\* FP821 with Inner Pocket (left)



Durable | Vibrant Colour | Easy Care | Wrinkle Free

\* Please refer page 62-63 for Size Chart



## FP 822

### MEN SERIES

SIZE: XS - 5XL | Short Sleeves



FP-822 A  
Red/ White



FP-822 E  
M.Green/ White



FP-822 G  
R.Blue/ White



FP-822 H  
Navy/ White



[Back View]

\* FP822 with Inner Pocket (left)

## FP 922

### LADIES SERIES

SIZE: 2XS - 5XL | 2-in-1 Sleeves



FP-922 A  
Red/ White



FP-922 E  
M.Green/ White



FP-922 G  
R.Blue/ White



FP-922 H  
Navy/ White



FP-922 P  
Pink/ White

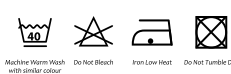


[Back View]

Durable | Vibrant Colour | Easy Care | Wrinkle Free  
\* Please refer page 62-63 for Size Chart



Durable | Vibrant Colour | Easy Care | Wrinkle Free  
\* Please refer page 62-63 for Size Chart







\* FP883 with Inner Pocket (left)



Durable | Vibrant Colour | Easy Care | Wrinkle Free

\* Please refer page 62-63 for Size Chart

## FP 883 MEN SERIES

SIZE: XS - 5XL | Short Sleeves



FP-883 A  
Olive/ Navy



FP-883 C  
L.Brown/ Navy



FP-883 E  
Blue/ Navy



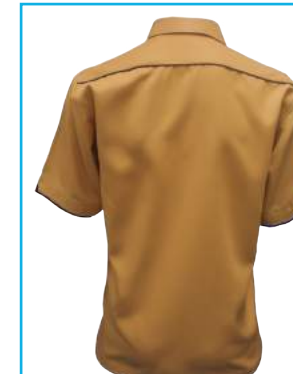
FP-883 F  
L. Blue/ Navy



FP-883 G  
A.Green/ Navy



FP-883 Y  
Yellow/ Navy



[Back View]

## FP 983 LADIES SERIES

SIZE: 2XS - 5XL | 3/4 Sleeves



FP-983 A  
Olive/ Navy



FP-983 C  
L.Brown/ Navy



FP-983 E  
Blue/ Navy



FP-983 F  
L. Blue/ Navy



FP-983 G  
A.Green/ Navy



FP-983 Y  
Yellow/ Navy



[Back View]





[Back View]



[Back View]

## FP 887 MEN SERIES

SIZE: XS - 5XL | Short Sleeves



FP-987 A

FP-887 A  
Red/ Black/ White

FP-987 F

FP-887 F  
Yellow/ Black/ White

FP-987 H

FP-887 H  
Navy/ Red/ White

FP-987 S

FP-887 S  
Maroon/ Black/ White

FP-987 C

FP-887 C  
A.Green/ Black/ White

FP-987 G

FP-887 G  
Orange/ Black/ White

FP-987 P

FP-887 P  
Purple/ Black/ White

FP-987 V

FP-887 V  
Khaki/ Black/ White

FP-987 E

FP-887 E  
Cyan/ Black/ White

FP-987 K

FP-887 K  
R. Blue/ Black/ White

FP-987 Q

FP-887 Q  
Cyan/ Red/ White

FP-987 R

FP-887 R  
Brown/ Black/ White

## FP 987 LADIES SERIES

SIZE: 2XS - 5XL | 2-in-1 Sleeves

\* FP887 with Inner Pocket (left)  
 \* FP987 with Inner Side Pocket



Durable | Vibrant Colour | Easy Care | Wrinkle Free  
 \* Please refer page 62-63 for Size Chart



# TRACKSUITS

12 SIZES AVAILABLE

29INCH ► 36INCH 38INCH 40INCH 42INCH 44INCH



**TS-288RBK**

**Material:** Tricot

**Trackjacket:** Red/ Black  
**Trackpants:** Black



**TS-288YBK**

**Material:** Tricot

**Trackjacket:** Yellow/ Black  
**Trackpants:** Black



**TS-288RBN**

**Material:** Tricot

**Trackjacket:** Royal Blue/ Navy  
**Trackpants:** Navy

Details:

- Full Set: With Track Jacket and Pants
- Trackjacket and Trackpants each comes with two side pockets and zip pockets
- Size: XS - 4XL

TRACK JACKET SIZE CHART

	XS	S	M	L	XL	2XL	3XL	4XL
Shoulder 肩宽 <i>bahu</i>	16"	18"	19"	20"	21"	22"	23"	24"
Bust 胸围 <i>dada</i>	42"	44"	46"	48"	50"	52"	54"	56"
Sleeve Length 袖长 <i>lengan</i>	21"	22"	23"	25"	25.5"	26"	26.5"	26.5"
Shirt Length 衣长 <i>panjang baju</i>	28"	29"	29.5"	30.5"	31"	32"	33"	33"

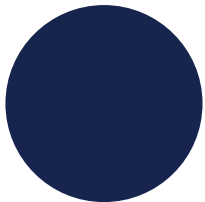
TRACK BOTTOM SIZE CHART

	XS	S	M	L	XL	2XL	3XL	4XL
Waist 腰围 <i>pinggang</i>	24"	25"	26"	28"	30"	32"	34"	36"
Length 裤长 <i>lengan</i>	36"	38"	40"	41"	42"	42"	43"	43"

## SLACK PANTS

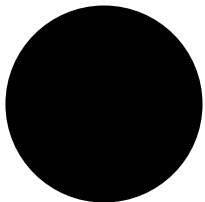
### CLASSIC FIT

Sits at the waist, standard rise, comfortable through seat, hip and thigh, tapered leg opening



**PP-799 N**

**Material:** Polysoft  
**Colour:** Navy



**PT-788 K**

**Material:** Tetron Rayon  
**Colour:** Black

SIZE	29"	30"	31"	32"	33"	34"	35"	36"	38"	40"	42"	44"
Waist 腰围 <i>pinggang</i>	29"	30"	31"	32"	33"	34"	35"	36"	38"	40"	42"	44"
Front Hip	20"	20.5"	21"	21.5"	22"	22.5"	23"	23.25"	24.25"	25.25"	26.25"	27.25"
Length	42"											

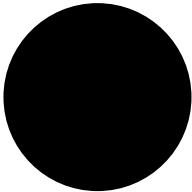
10 SIZES AVAILABLE

2XS ► 5XL

## LONG SKIRT

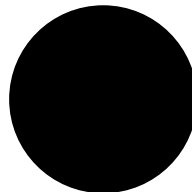
Suitable for all

Long-skimming length with elastic waistband.



**SC-688 K**

**Material:** Polycotton  
**Colour:** Black



**SP-699K**

**Material:** Polysoft  
**Colour:** Black



	2XS	XS	S	M	L	XL	2XL	3XL	4XL	5XL
Waist 腰围 <i>pinggang</i>	24"	26"	28"	30"	32"	35"	38"	42"	46"	50"
Hip 臀围 <i>punggung</i>	34"	37"	40"	43"	46"	49"	52"	55"	58"	61"
Skirt Length 裙长 <i>panjang skirt</i>	38"	38"	39"	39"	40"	40"	41"	41"	41"	41"



# MEASUREMENT GUIDE



Shoulder 肩膀 bahu



Bust 胸围 dada



Waist 腰围 pinggang



Sleeve length 袖长 lengan



Shirt Length 衣长 panjang baju



Hip 臀围 punggung



## MEN SERIES SIZE S

Height: 174 cm  
Shoulder: 18 inches  
Bust: 37 inches  
Waist: 32 inches  
18.5 inches

Weight: 67 kg



## MEN SERIES SIZE S

Height: 170 cm  
Shoulder: 18 inches  
Bust: 38.5 inches  
Waist: 33 inches

Weight: 62 kg



## LADIES SERIES SIZE 2XS

Height: 162 cm  
Shoulder: 13 inches  
Bust: 33 inches  
Waist: 25 inches

Weight: 43 kg



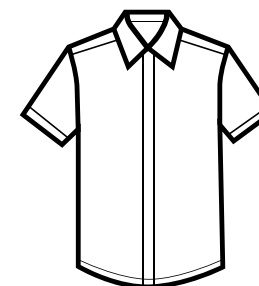
## LADIES SERIES SIZE XS

Height: 161 cm  
Shoulder: 14 inches  
Bust: 35 inches  
Waist: 27 inches

Weight: 47 kg

\* This is for illustration purpose only  
\* Please consider that this is just a guide for your reference

# SIZE CHART



## CLASSIC FIT 2XS to XL

Tailored Shape  
Lightly sits at the body, giving shape without being fitted

Suitable for most body types



## RELAXED FIT 2XL and Above

Longline +3" inch length at shirt front. Increase flexibility and range of motions.

Looks presentable and feel comfortable

All measurement in inches

## MEN SIZE CHART

	XS	S	M	L	XL	2XL	3XL	4XL	5XL
Shoulder 肩宽 bahu	17.5"	18"	19"	20"	21"	21.5"	22"	22.5"	23"
Bust 胸围 dada	40"	42"	44"	46"	49"	52"	55"	58"	61"
Sleeve Length 袖长 lengan	9"	10"	10.5"	11"	11.5"	12"	12"	12"	12"
Shirt Length 衣长 panjang baju	28"	29"	29.5"	30.5"	31"	32"	33"	33"	33"

## LADIES SIZE CHART

	2XS	XS	S	M	L	XL	2XL	3XL	4XL	5XL
Shoulder 肩宽 bahu	13"	14"	15"	16"	17"	18"	19"	19.5"	20"	20.5"
Bust 胸围 dada	36"	38"	40"	42"	44"	46"	48"	51"	54"	57"
Waist 腰围 pinggang	31"	33"	35"	37"	41"	44"	46"	49"	52"	55"
Sleeve Length 袖长 lengan	21"	21"	22"	22"	23"	23"	23"	23"	24"	24"
3/4 Sleeve Length 袖长 lengan	16"	16"	16.5"	17"	17.5"	18.5"	18.5"	19"	19"	19"
Shirt Length 衣长 panjang baju	26"	27"	28"	29"	29"	30"	30.5"	30.5"	31"	31"
Hip 臀围 punggung	37"	40"	42"	43"	45"	48"	52"	55"	58"	61"

## MUSLIMAH SIZE CHART

	2XS	XS	S	M	L	XL	2XL	3XL	4XL	5XL
Shoulder 肩宽 bahu	13"	14"	15"	16"	17"	18"	19"	19.5"	20"	20.5"
Bust 胸围 dada	36"	38"	40"	42"	44"	46"	48"	51"	54"	57"
Waist 腰围 pinggang	31"	33"	35"	37"	41"	44"	46"	49"	52"	55"
Sleeve Length 袖长 lengan	21"	21"	22"	22"	23"	23"	23"	23"	24"	24"
Shirt Length 衣长 panjang baju	32"	33"	34"	35"	35"	36"	36.5"	36.5"	37"	37"
Hip 臀围 punggung	37"	40"	42"	43"	45"	48"	52"	55"	58"	61"

\* Sizes may vary +/-5% from the actual product  
\* Colours shown in catalogue may vary 5-10% from the actual product  
\* Size and Colour may vary in the same series due to different batch order





54 heads embroidery machine

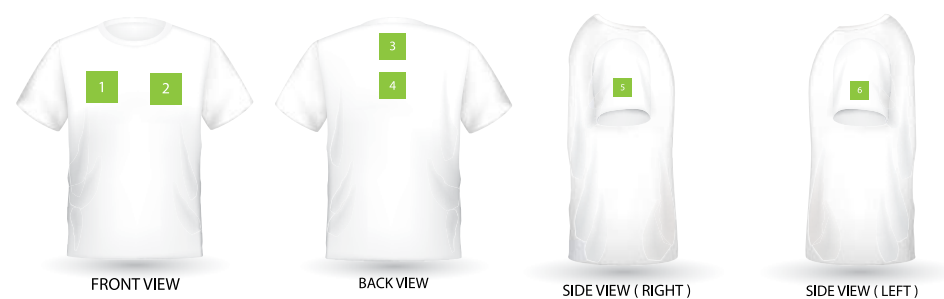
Perkhidmatan Sulam

## EMBROIDERY SERVICE

You can personalise your team look with MR2 customise. Add your logo / name

### Common embroidery position

- |                |                 |
|----------------|-----------------|
| 1 RIGHT CHEST  | 4 UPPER BACK    |
| 2 LEFT CHEST   | 5 RIGHT SLEEVES |
| 3 NAPE OF NECK | 6 LEFT SLEEVES  |



## CUSTOMISE SERVICE

Design your shirt with your choice of material, colour, and sizes.



Material- Polycotton, Polysoft, Denimsoft, Oxford, Micropoly

MR2 Size Range- 2XS to 9XL

Quantity- Minimum 50pcs and above

*Please request material and colour chart from our staff and provide your desired design.*



# DRESS SMART



### READY MADE

#### CLASSIC FIT

2XS to 2XL

#### RELAXED FIT

3XL to 5XL



Simple & Nice

2019-2020 Collection

[www.mr2.com.my](http://www.mr2.com.my)